

TO LET

WAREHOUSE AND
TRADE COUNTER SPACE

600–7,000 SQ FT



Bounds Green Industrial Estate



Enjoy boundless possibilities

Bounds Green Industrial Estate is a multi-let site in N11 and has 52 units ranging from 600 sq ft to 7,000 sq ft, offering a wide variety of space suitable for light industrial and trade counter use.



SPECIFICATION

Located in North London, Bounds Green Industrial Estate offers flexible, high-quality industrial spaces ideal for trade counters, manufacturing, logistics, and creative industries. The estate has 52 units ranging from 600 to 7,000 sq ft.

Each unit at Bounds Green Industrial Estate benefits from high ceilings, and dedicated loading bays. All units benefit from high-speed internet through hyperoptic, energy-efficient lighting, and parking. The estate is fully managed by a dedicated property manager and caretaker and monitored 24/7 with on-site CCTV. With a range of unit sizes, we offer the flexibility to find the perfect space for your specific needs.

 600 sq ft to 7,000 sq ft

 Easy access to A406

 24/7 Access

 Roller Shutter*

 Roof lights

 3 Phase Power*

 Energy Efficient Lighting

 Parking

 Estate Manager

 WCs

*some units only

Excellent connectivity

The site benefits from direct access to the A406 North Circular and is within walking distance of Bounds Green Tube Station, which is on the Piccadilly line. The estate provides excellent connectivity to central London and surrounding areas, making it an ideal base for growing businesses.



REACH KEY TRUNK ROADS WITHIN MINUTES

A406	0.1 miles	2 mins
M1	5.5 miles	17 mins
M25 Jct 24	6.5 miles	20 mins
A1(M)	8.9 miles	25 mins





FURTHER INFORMATION

TERMS

Leasehold –rent on application

EPC

Available upon request

VAT

Applicable



PAUL QUY

paul.quy@kirkbydiamond.co.uk
07917 268 653

HUGO HARDING

hugo.harding@kirkbydiamond.co.uk
07425 243 317



PETER HIGGINS

p.higgins@glenny.co.uk
020 3141 3534

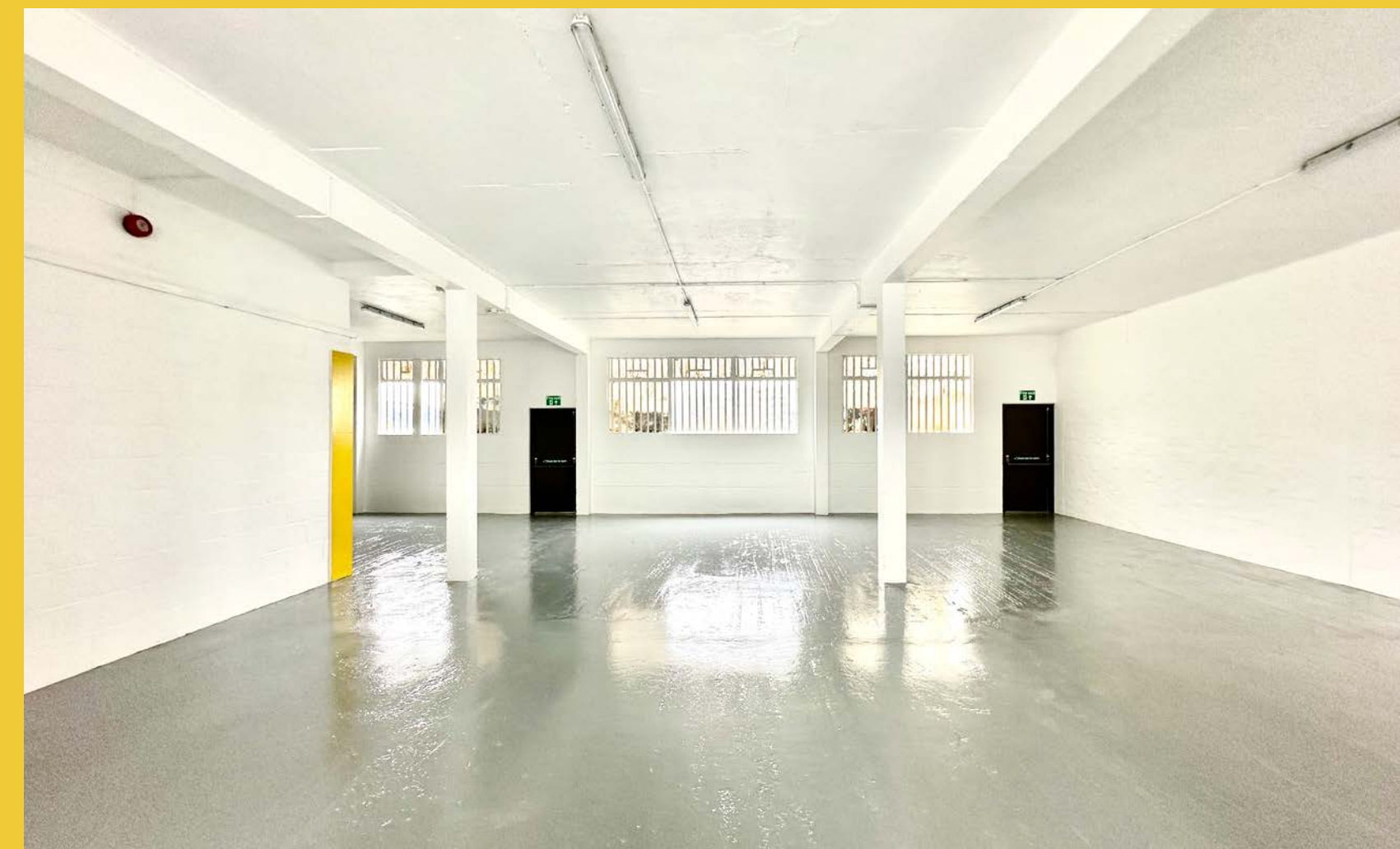
SAM SENDELL

s.sandell@glenny.co.uk
020 3141 3500



HARRY READ

hread@capitalindustrial.co.uk
020 7016 1535



Kirkby Diamond LLP for themselves and for the vendors, whose agents they are, give notice that these particulars are set out as a general guide only and do not constitute any part of any offer or contract. All descriptions, dimensions, reference to condition and the necessary permissions for use and occupation and other details are given in good faith and are believed to be correct but interested parties should not rely on them as statements or representations of fact but must satisfy themselves by inspection or otherwise as to the correctness of each of them. No person in the employment of Kirkby Diamond LLP has any authority to make or give any representation or warranty whatever in relation to this property. Kirkby Diamond LLP (Registration No OC420194) is authorised and regulated by the Royal Institution of Chartered Surveyors. Kirkby Diamond is a trading name of Kirkby Diamond LLP. November 2024.

Design by Studio 185 [studio185.london](https://www.studio185.london) | 969