

TO LET



Unit 172, Level 1

Bedford Heights, Brickhill Drive, MK41 7PH

344 Sq Ft (31.95 Sq M)

£4,816 Per Annum Exclusive

- Open Plan Office
- Parking Available
- Reception Staff
- Amenities Available

Location

The site is situated half a mile from Bedford Town Centre and allows easy access to the M1 and A1, with excellent rail connections to London.

Description

The offices are open plan and can be taken combined or individually. The property has an on-site centre; café and catering; full time facility management; reception support; lounge area and courtyards; 24-hour access; and a large conference and meeting venue with full AV facilities. There is 1 parking space available for this particular unit.

Terms

The premises are to be let on an effective full repairing and insuring lease for a term to be agreed at a rent of £4,816 per annum exclusive.

VAT

Intending occupiers should satisfy themselves as to the incidence or otherwise of VAT on this transaction.

Business Rates

Rateable Value – £5,600. Interested parties are advised to contact the relevant Local Authority.

Charges

Service Charge - £2,844.88 per annum
Building Insurance - £300 per annum
Electricity - £1,376 per annum

Accommodation

The property has been measured in accordance with the RICS Property Measurements Standard 6th Edition.

Accommodation	Sq M	Sq Ft
Total	31.95	344

Areas quoted are approximate and should not be held as 100% accurate.

EPC

Band C - 54

Viewings

For viewings and further information please contact:

Joshua Parello

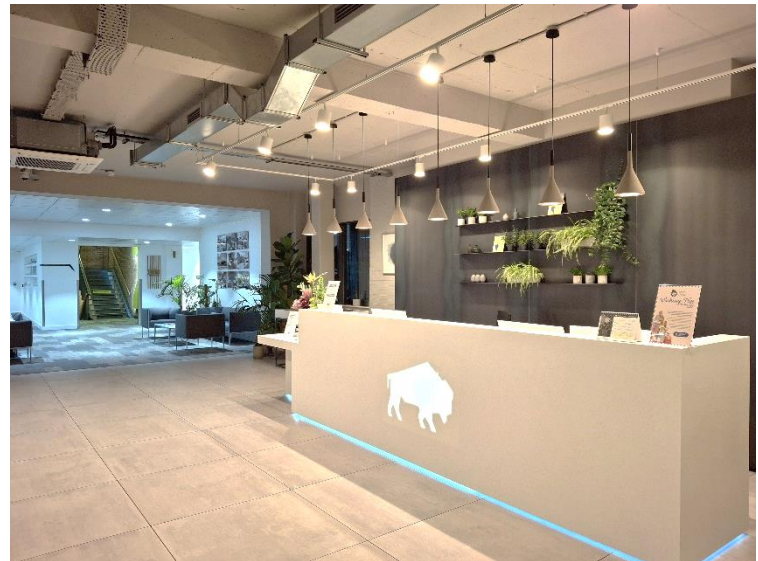
01234 982019

joshua.parello@kirkbydiamond.co.uk

Charlotte Beard

01234 905130

charlotte.beard@kirkbydiamond.co.uk



DISCLAIMER

Kirkby Diamond LLP for themselves and for the vendors, whose agents they are, give notice that these particulars are set out as a general guide only and do not constitute any part of any offer or contract. All descriptions, dimensions, reference to condition and the necessary permissions for use and occupation and other details are given in good faith and are believed to be correct but interested parties should not rely on them as statements or representations of fact but must satisfy themselves by inspection or otherwise as to the correctness of each of them. No person in the employment of Kirkby Diamond LLP has any authority to make or give any representation or warranty whatever in relation to this property. Kirkby Diamond LLP (Registration No OC420194) is authorised and regulated by the Royal Institution of Chartered Surveyors. Kirkby Diamond is a trading name of Kirkby Diamond LLP